

SLT5000

4.5kVA Super Silent Diesel Generator Lighting Tower

GENERATOR SPECIFICATION

Voltage	230/115
Phase	1
Frequency	50Hz
Prime Power (PRP)	4.5 kVA / 3.6 kW
Alternator	Meccalte S16W-130
Fuel tank capacity	34.0 Litres
Autonomy 75% load	29 Hours
Autonomy @ 800W	52 Hours (lights only)
LWA	92
dBA @ 7M	67

ENGINE SPECIFICATION

Engine	Yanmar L70NES
Emissions certified	N/A
Cylinders	Single
Distribution	O.H.V.
Aspiration	Normally aspirated
Cooling	Air
Displacement	0.320 Litres
Rpm	3000

LAMPS & MAST SPECIFICATION

Lamp Type	LED
Lamp power	4 x 200W
Lumens	100,000lm
Colour Temperature	5,000 - 6,500K*
Ingress protection	IP66
Mechanical impact	IK10
Mast Height	5.4 Metres
Winch Load Rating	900 Kg
Winch Cable	Stainless Steel

* Colour temperature is measured in degrees kelvin and denoted by a numerical figure followed by the letter 'k'. The LED lamps used on this set emit a "white light" similar to that of daylight.

SAFETY FEATURE

New for 2020 - The SLT5000 now incorporates a mast anti-collapse safety device. This safety system becomes active upon raising, whilst fully erected and lowering the mast. In the unfortunate event of the main rope breaking the anti-collapse safety device will automatically lock the mast and prevent it falling.

DIMENSIONS mm

Status	Length	Width	Height
Transport Mode	1200	860	1930
Fully Deployed	1660	1940	5400



3 Year Engine
Warranty (Limited)

YANMAR



WEIGHT KG

380	Dry
400	Wet

CONTROL PANEL

- DSE 3110 control module.
- Double pole MCB overload protection.
- AC voltage selector switch.
- 1 x 16A 230V BS4343 socket.
- 1 x 32A & 1 x 16A 115V BS4343 sockets.
- Overload protection for each individual socket.
- Generator/auxiliary mains switch for the lights.
- Emergency stop button.
- Fuel gauge.
- Fuel pump prime button (easy bleed upon service).
- Lockable control panel cover.
- *Optional item* - 7-day programmable start/stop timer.

STANDARD FEATURES

- Lights operational with either 115 or 230V selected.
- 4.5kVA generator dual voltage output
- 230V auxiliary socket for mains feed to the lights.
- Fully adjustable tilt and turn light heads.
- Adjustable stabiliser legs.
- Braked industrial four wheeled trolley kit.
- Low oil pressure, high engine temperature & low fuel level shutdowns.
- Acoustic weatherproof canopy.
- Lifting eye.
- Bunded fuel tank.
- Oil drain facility.

DSE 3110 AUTO START CONTROL MODULE

- The module will display warnings, shutdowns & engine status information on the back-lit LCD screen.
- Engine shutdowns include, high engine temperature & low oil pressure. Low fuel level warning.
- Monitoring & protecting AC volts & frequency (Hz).
- Hours run counter.
- Battery voltage monitoring.
- Licence free PC software.



ROAD TRAILER OPTION



Fully certified to 2007/46/CE ball hitch road tow trailer kit option

WEIGHT KG

455	Dry
475	Wet



ROAD TRAILER DIMENSIONS mm

Status	Length	Width	Height
Transport Mode	2380	1250	2130
Fully Deployed	2380	1940	5600

POWER DEFINITION

Prime Power (PRP) :

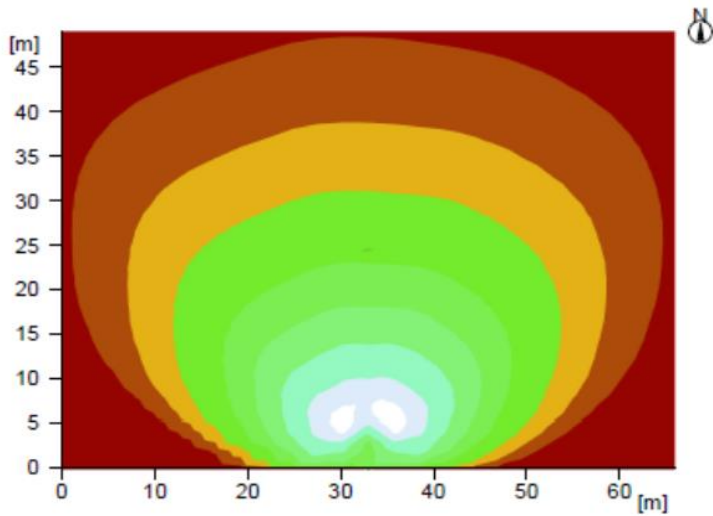
Applicable for supplying power to varying electrical load for unlimited hours in accordance ISO 8528-1. Page 2 of 3

K65 LED-4 200w 60 DEGREES ILLUMINATION LEVELS

The following values are based on exact calculations on calibrated lamps, luminaires and their arrangement. In practice, gradual divergences can occur.

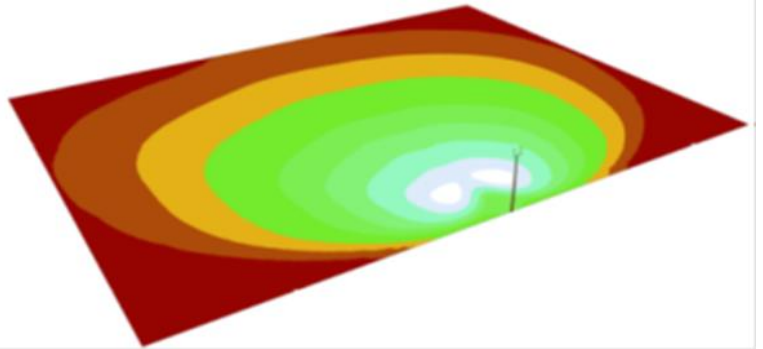
Guarantee claims for luminaire data are excluded.

SINGLE LIGHT HEAD DIRECTION ILLUMINATION

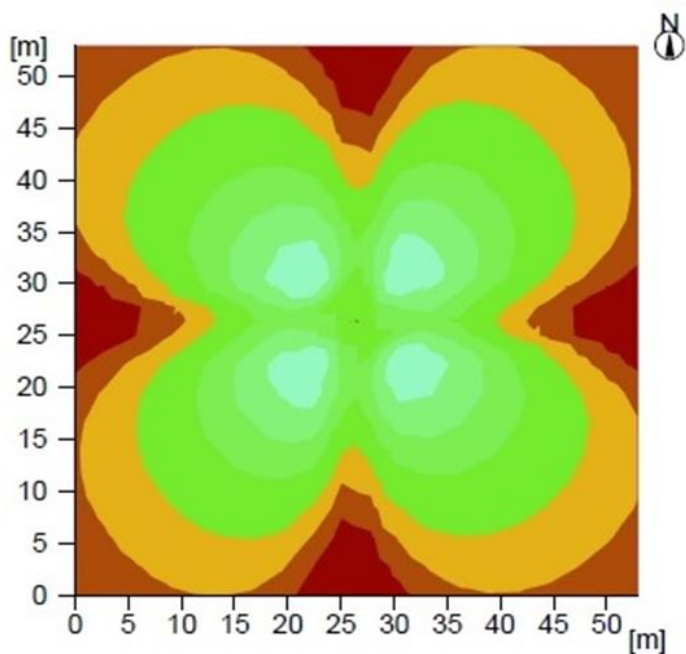


AREA - 3234m² @ 20 LUX AVERAGE

Total Luminous Flux	91528 lm
Total Power	792.0W
Total Power Per Area	0.24W/m ² (1.20 W/m ² /100lx)

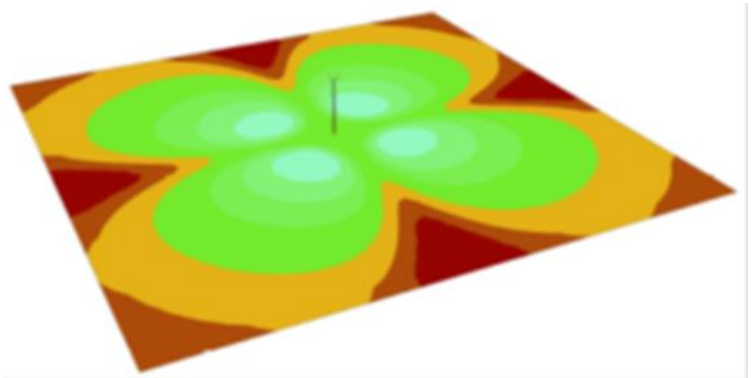


360 DEGREE ILLUMINATION



AREA - 2809m² @ 20 LUX AVERAGE

Total Luminous Flux	91528 lm
Total Power	792.0W
Total Power Per Area	0.28W/m ² (1.40 W/m ² /100lx)



*All data has been provided by Ritelite (systems) Ltd and is correct as of 11-04-16